

A woman with long blonde hair is sitting on a white, ornate, curved chair. She is wearing a bright red, short-sleeved, button-down dress with a subtle pattern. She is also wearing gold high-heeled sandals with a tassel detail. She is looking out of a window on the left side of the frame. The room has a brick wall on the right and a light-colored floor. The lighting is warm and dramatic, with strong shadows.

SAHOCO

EVENING

HIGH SUMMER 22



DRESS SH2202535V









DRESS SH2202537V





DRESS SH2202540V









DRESS SH2202539V

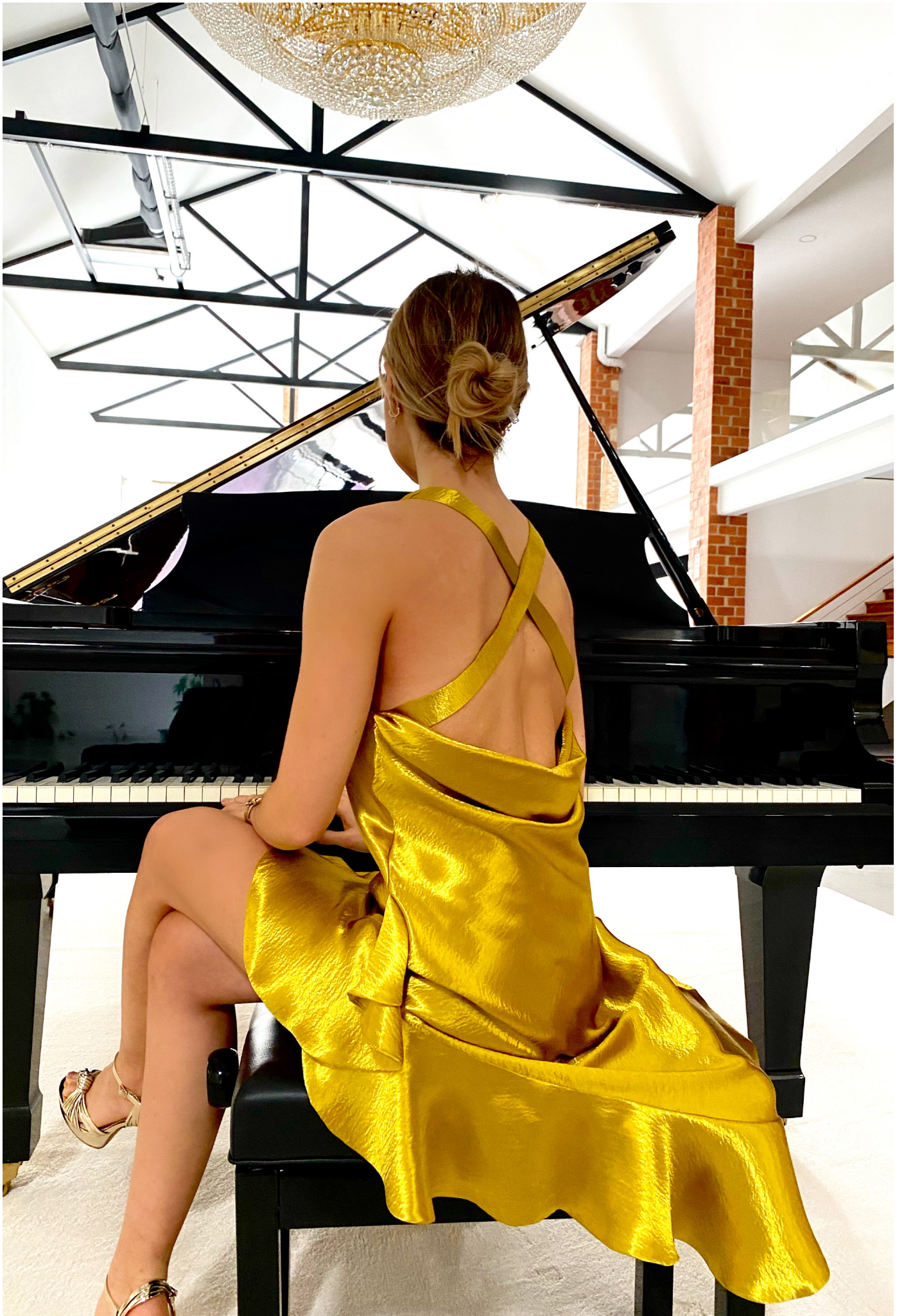




DRESS SH2202536V









DRESS SH2202534V





DRESS SH2202538V





SAHOCO

Cofinanciado por:

